

PROPOSED UAV OPERATIONS FROM YWSG

Please be advised that Insitu Pacific intend to approach CASA for an area approval to conduct unmanned aerial vehicle operations from YWSG – Watts Bridge Memorial Airfield on Thursday 1st and Friday 2nd October 2009.

All flights will be conducted by the ScanEagle UAV and be within line of sight of the airfield and at an altitude of not above 2000ft amsl during the day and not above 3000ft amsl during the evening. All flights, subject to CASA approval, will be conducted in accordance with CASR pt 101 and the conditions of the approval. The activity will be activated by NOTAM.



Specifications			
Dimensions	Wing span	10.2 ft	3.1 m
	Fuselage diameter	7.0 in	0.2 m
	Length	3.9 ft	1.2 m
Performance	Max level speed	72 knots	37 m/s
	Cruise speed (max wt.)	49 knots	24 m/s
	Service ceiling	19,400 ft	5,913 m
	Endurance	20 hours	20 hours
	Climb rate (max wt.)	400 ft/min	2 m/sec
	Still air range / No reserves	1,100 nm	2,000 km
Weights	AV (empty weight)	26.5 lbs	12 kg
	Fuel and payload	13.2 lbs	6 kg
	Max fuel	12.1 lbs	5.5 kg
	Max takeoff weight	44 lbs	18 kg

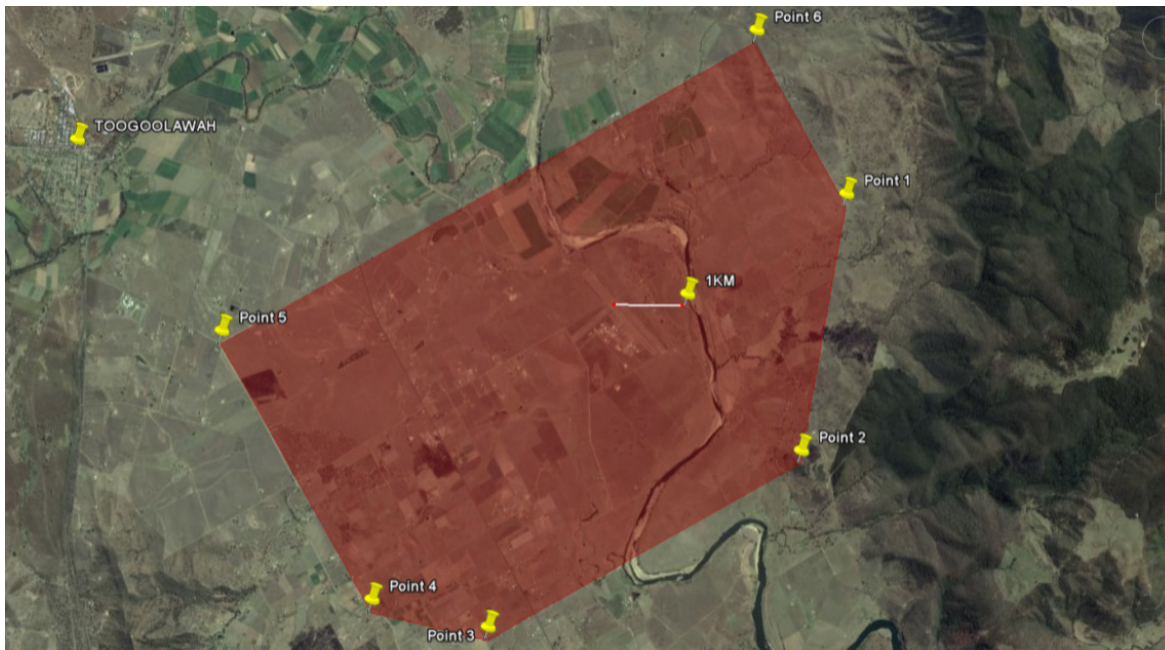
Insitu Pacific will be providing CASA a detailed risk management plan as part of the approval process.

The ScanEagle by virtue of its design is stealthy and difficult to see. For the purpose of this activity, the air vehicle will have high visibility wings and winglets and nose (only winglets shown in photo above) and an upper and lower strobe. On the ground there will be a human observer who will be monitoring the airspace and provide deconflicting advice to the UAV controller.

The Crew will also be monitoring and broadcasting on CTAF 127.3 and Brisbane centre 129.0 and a transponder squawking 1200. Callsign will be “Unmanned Eagle”.

The proposed area of operations is contained within the lines between the following points:

	LAT	LON		LAT	LON
Pt 1	27° 4' 37.94" S	152° 29' 27.20" E	Pt 4	27° 8' 15.79" S	152° 25' 47.33" E
Pt 2	27° 6' 38.22" S	152° 29' 22.87" E	Pt 5	27° 6' 23.82" S	152° 24' 7.85" E
Pt 3	27° 8' 20.31" S	152° 26' 50.79" E	Pt 6	27° 3' 29.46" S	152° 28' 27.43" E



Insitu Pacific realises that YWSG is at times a busy airfield and is frequently flown to or transited by SE QLD aviators. As such Insitu Pacific have proposed a time during the week where it is likely to be the most convenient time as most activities occur during the weekend or during organised club events.

However, should you wish to conduct flight operations to YWSG during this proposed period, Insitu Pacific requests that we are able to communicate so that some coordination in separation can be made and that we do not affect your flight plan or intentions.

Please contact myself, Rich Clifford for any further information or concerns that you have with this proposed activity.

Richard Clifford

Chief Pilot / Controller
 Insitu Pacific Ltd
 86 Brookes St
 Fortitude Valley
 QLD 4006

Mob: 0425 158 078

Email: richard.clifford@insitupacific.com